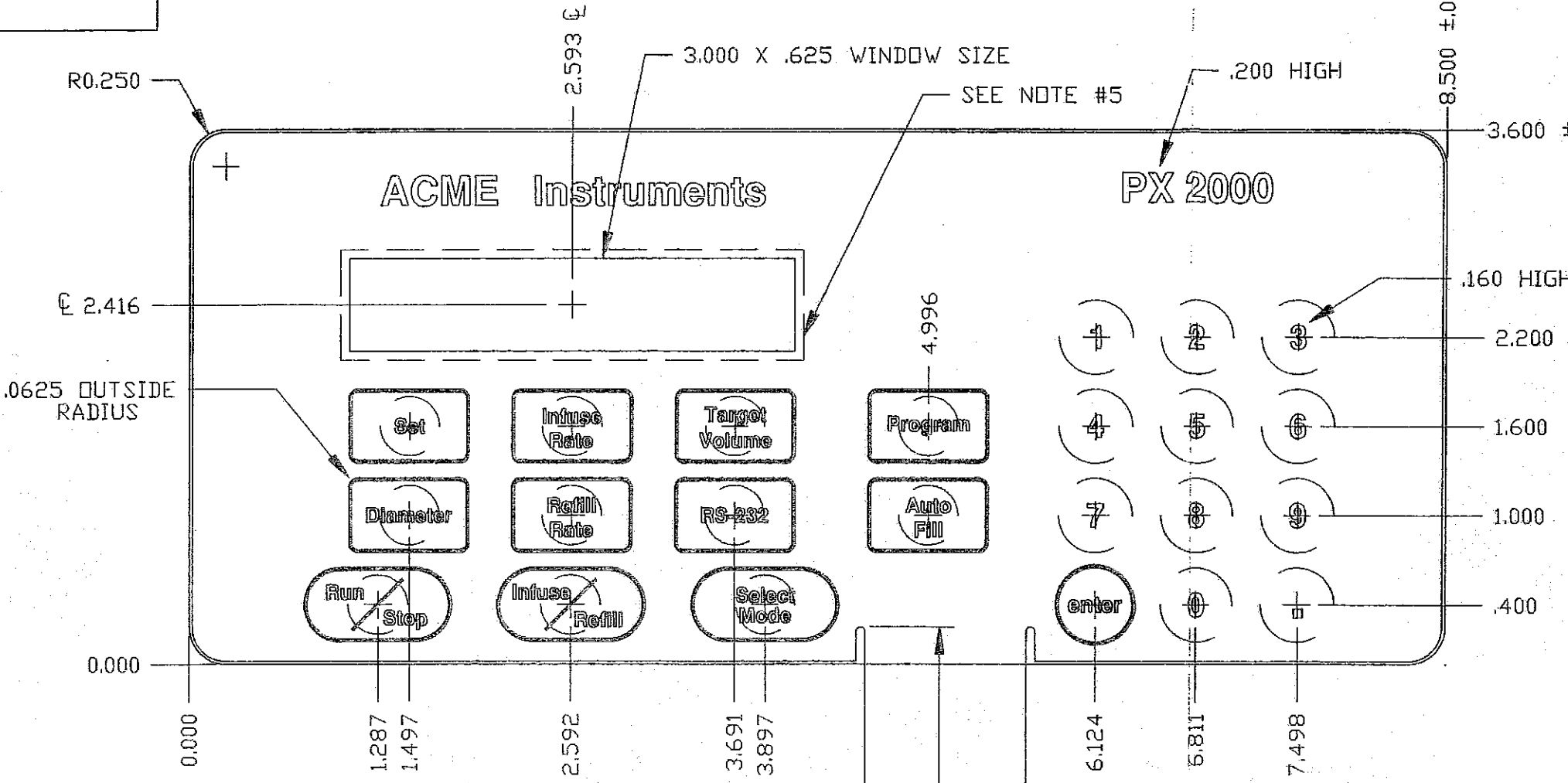


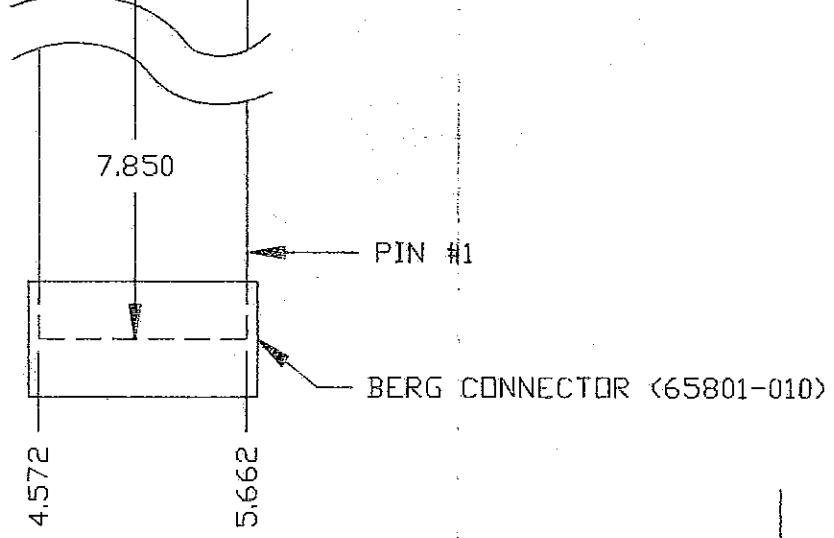
DWG. NO. - REV.

ITEM	QTY.	PART NO.	DESCRIPTION



- NOTES:
- FACEPLATE MATERIAL: .007 POLYESTER WITH B9214 VELVET TEXTURE
  - WINDOW COLOR T-GREEN 46607/W1/200
  - "0-9", "ENTER", AND "." TO HAVE .500 DIAMETER GRAPHIC POLYTACTILE DOME. THE "ENTER" KEY TO HAVE BORDERS OF .500" INSIDE AND .540" OUTSIDE. ALL OTHER KEYS TO HAVE .440" DIAMETER POLYTACTILE DOMES WITH .460" INSIDE AND .500" OUTSIDE BORDERS.
  - TAIL BREAKOUT TO BE .250" FROM PART EDGE.
  - SWITCH CUTOFF TO BE OVSIZED .060" PER SIDE LARGER THAN WINDOW.
  - TAIL WILL HAVE A U.V. PRINTED TAILCOVER
  - TOTAL PACKAGE THICKNESS: .040"-.050" (NOT INCLUDING ADHESIVE LINER).
  - XYMOX STANDARD TOLERANCES APPLY.
  - ACTIVATION FORCE: 20-27 OUNCES
  - "ACME" TEXT TO BE RED 194C
  - "Instruments" TEXT TO BE COOL GRAY 5C
  - "PX 2000" TEXT TO BE COOL GRAY 5C
  - BACKGROUND COLOR TO BE BLACK.
  - TEXT STYLE: HELVETICA
  - TEXT SIZE: .100 HIGH EXCEPT WHERE NOTED.
  - TEXT TO BE CENTERED WITHIN KEYS.
  - MAXIMUM RESISTANCE: 100 OHMS
  - APPLICATION ADHESIVE: 3M 467MP OR EQUIVALENT
  - CONTACT RATING: 30VDC MAX. 100mA MAX. 1 WATT MAX.
  - TEMP. RANGE:  
OPERATING: -34°C TO +65°C (-30°F TO 149°F)  
STORAGE: -40°C TO +65°C (-40°F TO 149°F)
  - PLEASE REFERENCE BLUEPRINT CHECKLIST FOR ALL STANDARD TOLERANCES THAT APPLY TO SWITCH PACKAGE.

ELECTRICAL PINOUT			COLOR CALLOUT	
KEYS	X	Y	BORDER COLOR	TEXT COLOR
SET	1	9	GREEN 3272C	COOL GRAY 1C
INFUSE RATE	1	8	COOL GRAY 5C	COOL GRAY 1C
TARGET VOLUME	1	7	COOL GRAY 5C	COOL GRAY 1C
PROGRAM	2	10	YELLOW 110C	COOL GRAY 1C
DIAMETER	2	9	COOL GRAY 5C	COOL GRAY 1C
REFILL RATE	2	8	COOL GRAY 5C	COOL GRAY 1C
RS-232	1	10	COOL GRAY 5C	COOL GRAY 1C
AUTO FILL	2	7	COOL GRAY 5C	COOL GRAY 1C
RUN/STOP	3	8	RED 194C	COOL GRAY 1C
INFUSE/REFILL	3	7	YELLOW 110C	COOL GRAY 1C
SELECT MODE	3	10	YELLOW 110C	COOL GRAY 1C
1	5	9	N/A	COOL GRAY 1C
2	6	9	N/A	COOL GRAY 1C
3	4	9	N/A	COOL GRAY 1C
4	5	8	N/A	COOL GRAY 1C
5	6	8	N/A	COOL GRAY 1C
6	4	8	N/A	COOL GRAY 1C
7	5	7	N/A	COOL GRAY 1C
8	6	7	N/A	COOL GRAY 1C
9	4	7	N/A	COOL GRAY 1C
0	6	10	N/A	COOL GRAY 1C
ENTER	4	10	N/A	COOL GRAY 1C
ENTER	5	10	GREEN 3272C	COOL GRAY 1C



SAMPLE BLUEPRINT

ENG. SPECIFICATIONS EXCEPT AS NOTED:				REV. DATE NAME DESCRIPTION OF CHANGE			
DECIMAL TOLERANCE		FRACTIONAL ±1/64		MAT'L:		DES. BY	
(1.) Standard Xymox		ANGULAR ±1/2°		FINISH		DATE	
(1.0) tolerances per		STD. MACHINING 125/		MATL		CHKD. BY	
(1.00) blueprint checklist.		DEBURR ALL SHARP EDGES		DRAWN BY		DATE	
(1.000) ±.010		DO NOT SCALE		ACAD		APPD. BY	
MACH. NAME		SCALE:		QTY. PER UNIT:		USED ON DWG.:	
PROJECT NO.:		PROJECT TITLE:		DWG. TITLE:		DIV. USED AT:	
SAMPLE		XYMOX TECHNOLOGIES		MEMBRANE KEYPAD		DWG. NO.	
						50-1225-99A	
						REV.	
						Ø	